



OFFICIAL NEWS RELEASE

MISSISSIPPI FORESTRY COMMISSION

660 North Street, Suite 300
Jackson, MS 39202

www.mfc.ms.gov

FOR IMMEDIATE RELEASE

January 27, 2017

Contact:
Brighton Forester
Public Relations Director
(601) 359-2821 office
(601) 500-0489 cell
bforester@mfc.state.ms.us

Forestland Economic Impact Assessment for EF-3 Tornado

Jackson, Miss. – The Mississippi Forestry Commission (MFC) conducted an aerial detection flight of the area affected by the EF-3 tornado that traveled through Lamar, Forrest, and Perry counties on January 21, 2017. The purpose was to assess damage to forested acreage and estimate the potential economic impact.

Summary of the data collected by the MFC on January 24, 2017:

- Approximately **1,571 forested acres damaged**
 - 1,453 acres - privately owned
 - 118 acres - public lands managed by the MFC
- Approximately 4,320 total acres impacted

The estimated economic impact on privately owned forestland is listed below (by county):

Table 1: Estimated economic impact - private forestland

County	Pine Acres	Hardwood Acres	Mixed Acres	Total Acres	Total Economic Impact
Lamar	484	144	149	777	\$ 305,392
Forrest	143	130	127	400	\$ 49,504
Perry	161	42	73	276	\$ 55,888
Total	788	316	349	1,453	\$ 410,784

**Public forestland and urban forestland within city limits were not used in Table 1 calculations.*

The economic impact estimate takes into account young sub-merchantable stands, as well as mature timber. The value estimate may be low for individual timber stands or landowners, as some experienced the loss of high-value trees. The amounts used to calculate the value estimate were \$5/ ton for pulpwood and \$25/ ton for sawtimber.

The total economic impact of the EF-3 tornado on all forested acreage in the affected area (including public forestland and urban forestland within city limits) was estimated to be between \$410,784 - \$1,089,750.

###

Established in 1926, the Mississippi Forestry Commission (MFC) protects the state's valuable forest resources from wildfire, manages approximately 480,000 acres of forested School Trust Land, and delivers quality forest management services and assistance to both rural and urban landowners. Our mission is to provide active leadership in forest protection, forest management, forest inventory, and effective forest information distribution, necessary for Mississippi's sustainable forest-based economy.

There are approximately 19.8 million forested acres in Mississippi. The forestry and forest products industry has a \$12.79 billion economic impact on the state of Mississippi and represents almost 70,000 jobs.

Resources:

Mississippi Forestry Commission Website - www.mfc.ms.gov

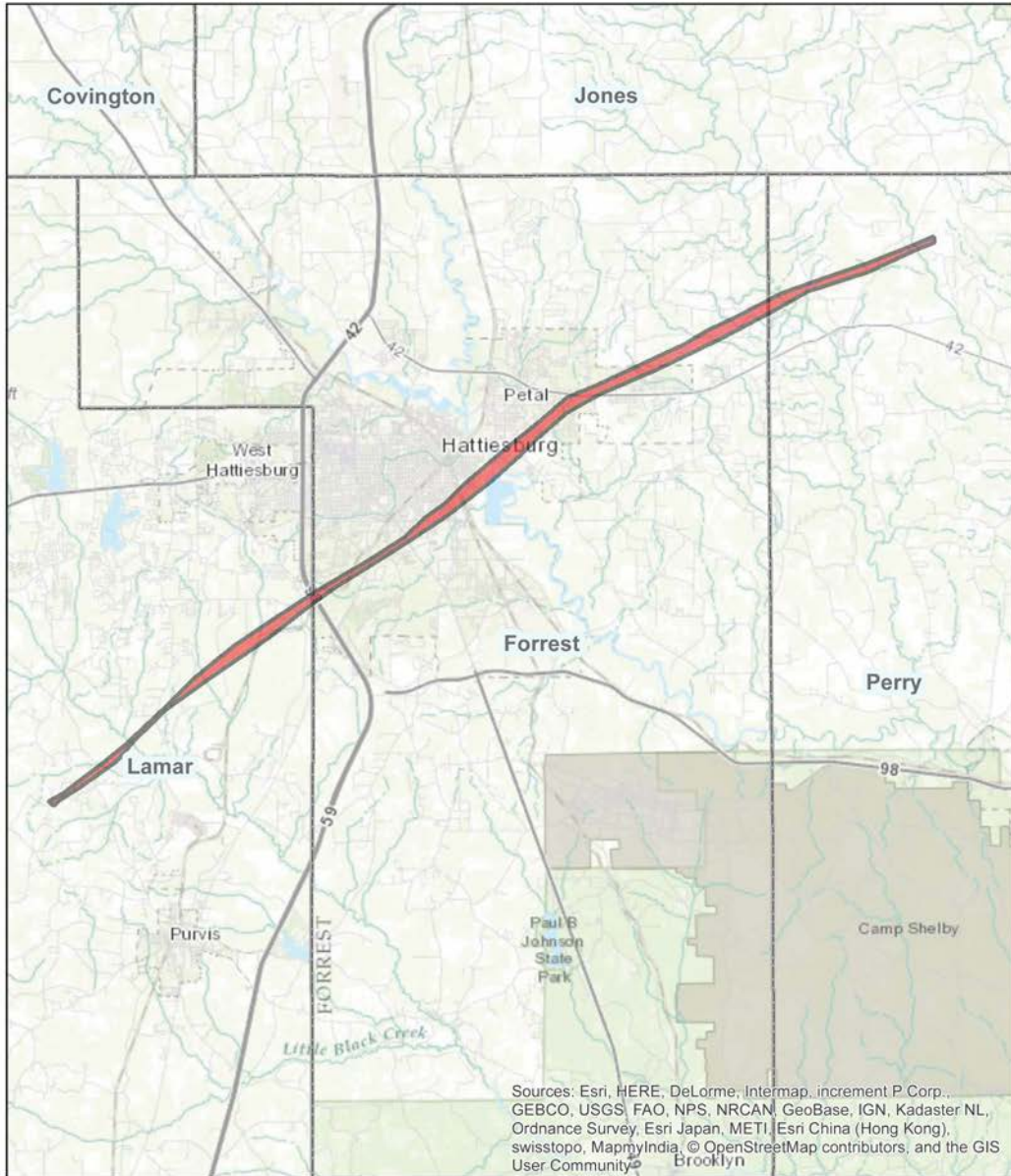
Click [here](#) to visit the MFC on Facebook

Click [here](#) to visit the MFC on Twitter





January 21, 2017 - EF-3 Tornado Total Impact Approximately 4,320 acres



0 2.25 4.5 9 Miles

Aerial detection survey conducted by the MFC
January 24, 2017
Map by Joshua Skidmore, MFC GIS Analyst