



Southern Pine Beetle Prevention Program – Mississippi

The southern pine beetle [SPB] (*Dendroctonus frontalis* Zimmermann), is considered the most destructive forest insect in the southeastern United States. Mississippi has experienced tremendous losses from this species as well as from the other members of the southern pine bark beetle guild. This guild includes the black turpentine beetle, *D. terebrans*, the 4-, 5-, and 6- spined engravers (*Ips avulsus*, *I. grandicollis* and *I. calligraphus* respectively). Their gallery patterns, unique characteristics and relative size, one to another, are depicted in the figure above. The picture is of a painting by Richard Kleifoth; Southern Forest Research Institute and taken by Ronald F. Billings, Texas Forest Service,

www.forestryimages.org.

The Mississippi Forestry Commission (MFC) has received funding through the U. S. Forest Service for the development of “A Comprehensive Southern Pine Beetle Prevention Program for Mississippi.” The MFC has partnered with

the Department of Forestry at Mississippi State University to

identification, biology, and SPB prevention activities. The specific prevention activities being discussed are thinning methods and the importance of spacing, especially in mature plantations and stands.

Forest landowner workshops are focusing on how to determine when pine stands are ready to be thinned. Specifically the kinds of data necessary to determine if their stands are ready to be thinned and methods of obtaining said data is presented. This includes discussions on what equipment is necessary to obtain the data and how to use the equipment. To further assist landowners in determining, for themselves, when

their pine trees need to be thinned, the necessary equipment will be provided to the county forestry association for members use. This equipment includes crement borers, diameter tapes, clinometers, plot center stake, height pole, and 1/100th acre rope or chain.

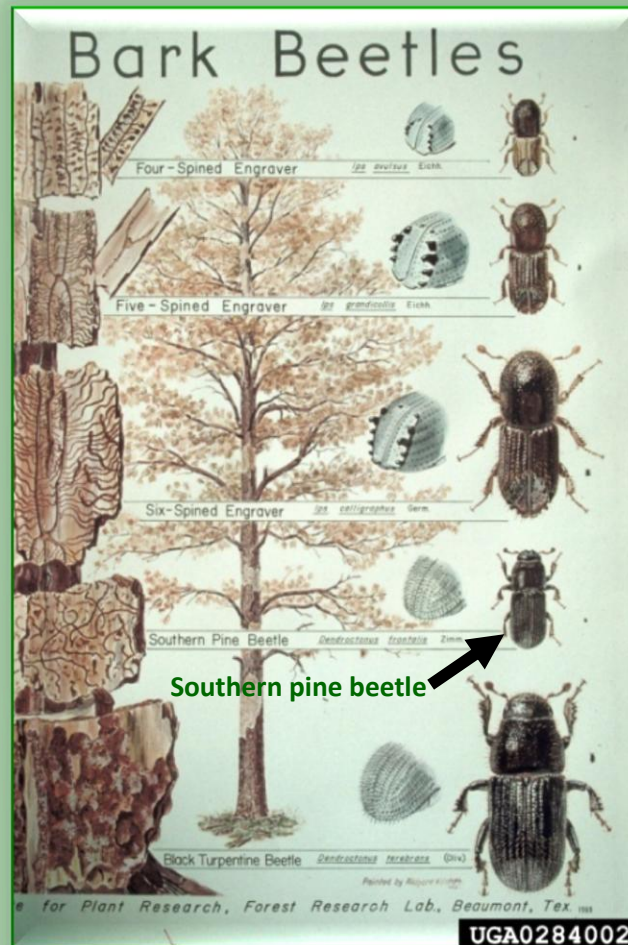


Figure 1: Bark Beetles.

accomplish the goals of this program.

Included in this program are field days, workshops (including lectures and laboratory), that includes discussions concerning SPB



Technical Bulletin

Forest Health
Notes # 9
Issued: 2/2007

Southern Pine Beetle Prevention Program – Mississippi

In addition to the outreach portion of this project, a cost share program is being developed. This cost share program is designed to assist landowners with precommercial and first commercial pine plantation thinning in high hazard areas. Hazard rating is based on site and stand conditions that have been historically associated with SPB infestations. Site and conditions such as pine basal area, total basal area, age; radial growth (last 10 years), and site index are included. As the cost share program begins a “pilot project” for Mississippi will be implemented first in the North East District of the Mississippi Forestry Commission.

For additional information contact:

[Mississippi Forestry Commission Local Office](#), T. Evan Nebeker
tevannebeker@bellsouth.net or
Andy Londo
ajlondo@cfr.msstate.edu